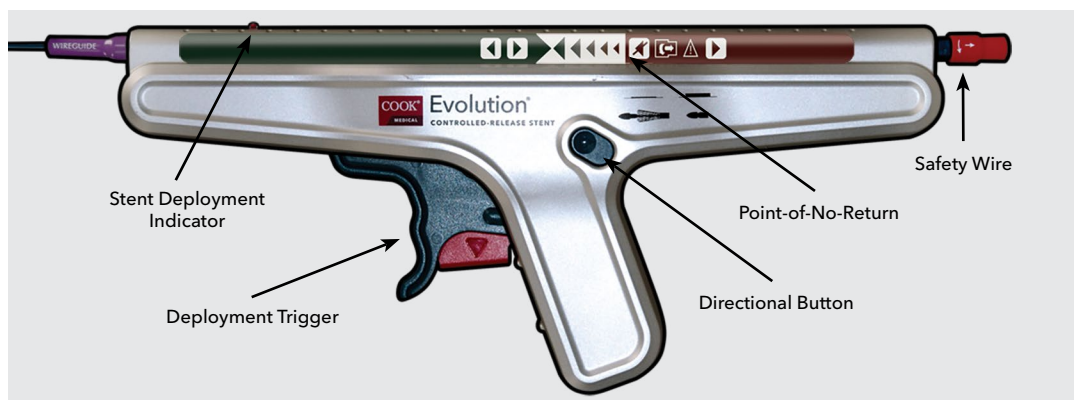


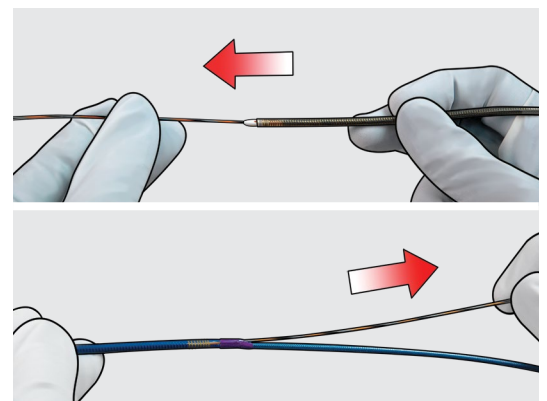
Evolution® Biliary

CONTROLLED-RELEASE STENT

Features

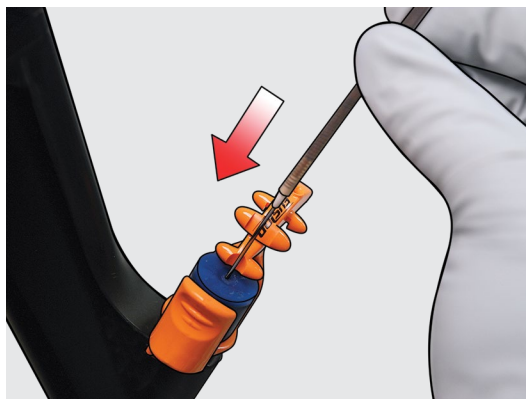


Step 1



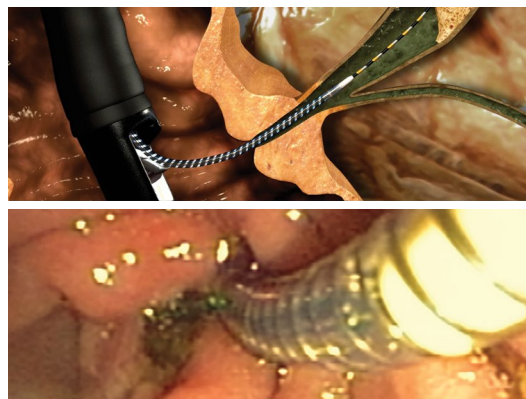
Backload device over a prepositioned wire guide, ensuring the wire guide exits through the zip port.

Step 2



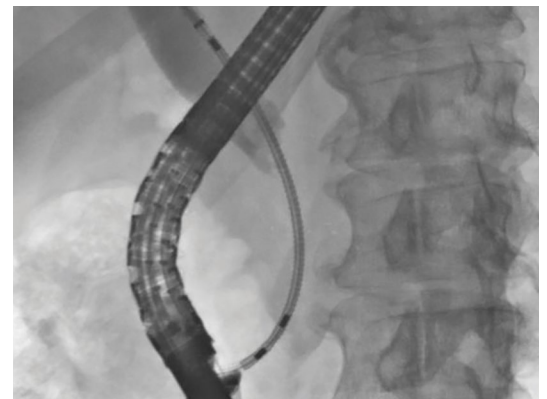
Unlock the wire guide from locking device and introduce the device in short increments until zip port is inside of accessory channel, then relock the wire guide. Continue advancing device in short increments.

Step 3



With elevator open, advance device until you endoscopically visualize it exiting endoscope. For transpapillary placement, reference the yellow marker for accurate stent positioning. **NOTE:** Stents bridging papilla should extend beyond papilla and into duodenum approximately 0.5 cm after deployment.

Step 4



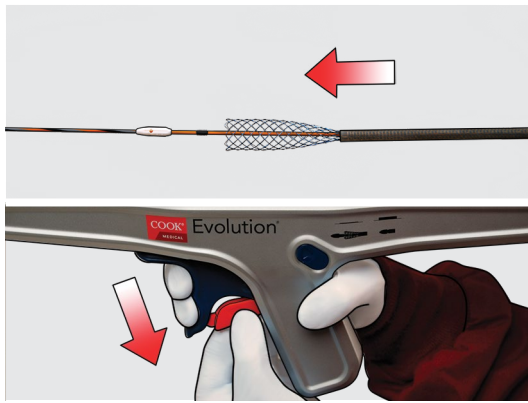
Under fluoroscopic guidance with elevator open, continue to advance device until the stent is visualized through the stricture. Fluoroscopically visualize radiopaque markers on either end of the stent and position the radiopaque markers a minimum of 1 cm beyond the stricture.

Image in Step 3 courtesy of Prof. Horst Neuhaus EVK, Dusseldorf, Germany.

Images in Step 4 and 9 courtesy of Prof. Marco Bruno Erasmus Medical Centre, Rotterdam, The Netherlands.

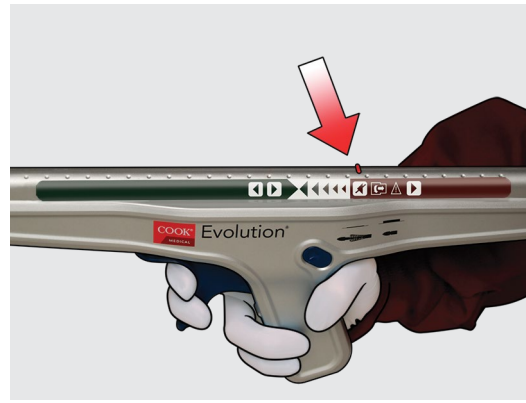
WARNING: The safety and effectiveness of this device for use in the vascular system have not been established.

Step 5



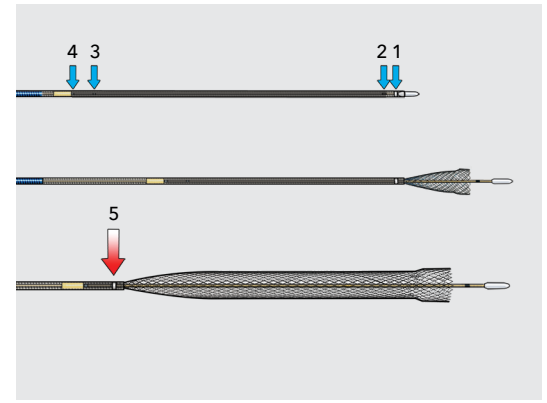
Confirm the desired stent position. To deploy the stent, remove red safety guard from handle then squeeze trigger. Continue deploying the stent by squeezing trigger.

Step 6a



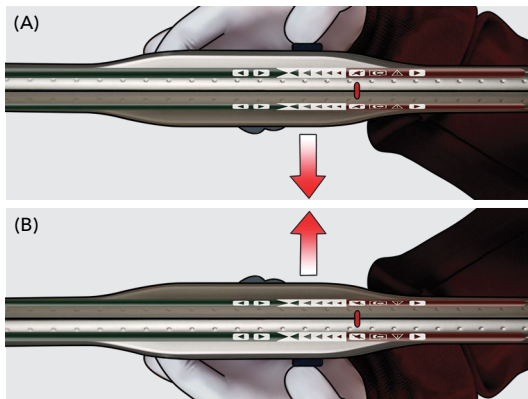
If repositioning is required during deployment, it is possible to recapture stent. **NOTE:** It is **not** possible to recapture stent after passing point-of-no-return, indicated when the red marker on top of the handle has passed the point-of-no-return on handle label.

Step 6b



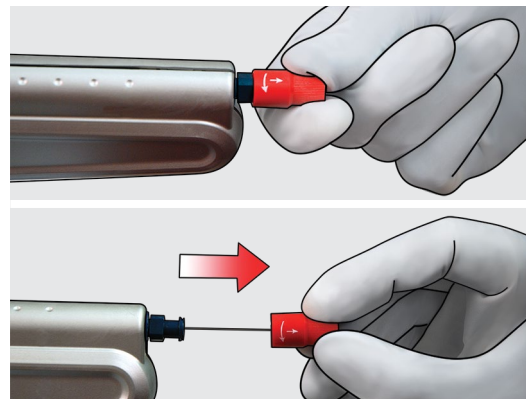
If fluoroscopically monitoring the point-of-no-return, the stent can be recaptured until the point where the external catheter radiopaque marker is aligned with the second internal catheter radiopaque marker. **NOTE:** It is **not** possible to recapture stent after the outer catheter radiopaque marker passes the second inner catheter radiopaque marker. **NOTE:** The stent can be recaptured a maximum of three times.

Step 7



(A) To recapture stent, the elevator must be open, then push directional button on side of delivery system to opposite side. **NOTE:** Hold your thumb on the button when squeezing trigger for the first time to recapture. Continue squeezing the trigger as required to recapture stent by desired amount. (B) To resume deployment, push the directional button to opposite side and hold the button for the first stroke while squeezing trigger.

Step 8



When stent point-of-no-return has been passed, disconnect the Luer lock fitting and remove safety wire completely from delivery handle. Continue deploying stent by squeezing trigger.

Step 9



After deployment, fluoroscopically confirm stent expansion. While maintaining wire guide position, push direction button to the opposite side. Squeeze the trigger to completely recapture the introduction system. Remove the wire guide and introduction system from endoscope with elevator fully down.

Refer to current Instructions for Use for detailed system use.

Customer Service

EU Website: cookmedical.eu
 EDI: cookmedical.eu/edi
 Distributors: +353 61239240, ssc.distributors@cookmedical.com
 Austria: +43 179567121, oe.orders@cookmedical.com
 Belgium: +32 27001702, be.orders@cookmedical.com
 Denmark: +45 38487607, da.orders@cookmedical.com
 Finland: +358 972519996, fi.orders@cookmedical.com
 France: +33 171230269, fr.orders@cookmedical.com
 Germany: +49 6950072804, de.orders@cookmedical.com
 Hungary: +36 17779199, hu.orders@cookmedical.com
 Iceland: +354 8007615, IS.orders@cookmedical.com
 Ireland: +353 61239252, ie.orders@cookmedical.com
 Italy: +39 0269682853, it.orders@cookmedical.com
 Netherlands: +31 202013367, nl.orders@cookmedical.com
 Norway: +47 23162968, no.orders@cookmedical.com
 Spain: +34 912702691, es.orders@cookmedical.com
 Sweden: +46 858769468, se.orders@cookmedical.com
 Switzerland - French: +41 448009609, fr.orders@cookmedical.com
 Switzerland - Italian: +41 448009609, it.orders@cookmedical.com
 Switzerland - German: +41 448009609, de.orders@cookmedical.com
 United Kingdom: +44 2073654183, uk.orders@cookmedical.com

USA Website: cookmedical.com
 EDI: cookmedical.com/edi.do
Americas:
 Phone: +1 812.339.2235, 800.457.4500, Fax: 800.554.8335
 E-mail: customersupport@cookmedical.com
Australia:
 Phone: +61 734346000, 1800777222, Fax: +61 734346001, 1800077283
 E-mail: cau.custserv@cookmedical.com



AI, ESC, IR, OHNS, PI, RH, SUR-8.5X11